



# PRODUCTS CATALOG

Programmable Logic Controller  
Human Machine Interface



Addr1:10th Building,E Area,Software Park, Fuzhou,Fujian,China(Manufacturing Center)  
Addr2: 6th Building,F Area,Software Park,Fuzhou,Fujian,China(R & D Center)  
Tel: +86-591-87868869 ext 894 Fax: +86-591-87843899  
Website:www.we-con.com.cn/en  
Email: sales@we-con.com.cn skype:lily-wecon  
Edition No.:WCT3.1.1



2020 Edition

WECON TECHNOLOGY Co.,LTD.All Rights Reserved.

# About WECON

FUZHOU FU CHANG WECON ELECTRONICS TECHNOLOGY CO.,LTD.

WECON Technology Co., Ltd. is a Chinese high technology company, headquartered in Fuzhou software park, Fujian. We independently develop, manufacture, support and sell Human Machine Interface (HMI), Programmable Logic Controller (PLC), Industrial Panel PC (IPC) and V-BOX for Industrial IoT.

Our products are widely used in Machinery, Metallurgy, Chemical, Oil & Gas and other industries. As of May 1st, 2018, WECON has been authorized 47 patents, including 4 utility patents, 41 software intellectual property patents, and 2 appearance patents.

WECON have over 40 domestic offices in major industrial cities, providing technical and sales services to more than 100 agents and numerous terminals throughout the country. Besides domestic market, WECON also expands International market actively. We export products to more than 120 countries and have many distributors such as India, Turkey, Italy, Poland and so on.

**Concept:** Easy Control, Easy Life

**Values:** Specialization, Branding, Internationalization

**Mission:** Creating value for our customers, staffs, suppliers and society

## Culture

|                        |                                    |  |   |   |  |      |      |      |      |      |
|------------------------|------------------------------------|--|---|---|--|------|------|------|------|------|
| Founded WECON          | Establish Foreign Trade Department | Awarded as National High-tech Enterprise | Awarded as Fujian Little Giant Enterprise in Science & Technology | Launch V-BOX & V-NET IIoT System        | Priority into IIoT demonstration platforms in Fujian |      |      |      |      |      |
| 2006                   | 2006-2009                          | 2010                                     | 2012  | 2014                                    | 2015   | 2016 | 2016 | 2017 | 2018 | 2019 |
| Launch LEVI Series HMI | Launch LX Series PLC               | Launch high-end PI Series HMI            | Launch Wecon Smart APP  | Awarded as Fujian Technology Enterprise |  |      |      |      |      |      |

# PI9000 SERIES

Super Size High Resolution

Cortex A9 1.4GHz

Aluminum Body

All Metal Design, with Nobility



TFT

High Definition

High Resolution

16000k colors

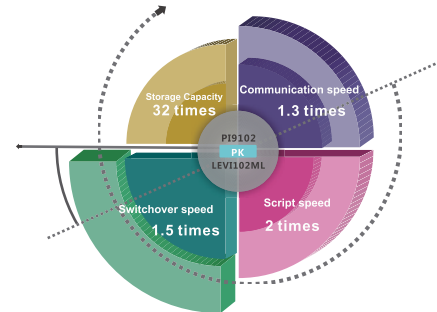
Full view LCD screen

1920 x 1080 pixels



# PI8000 SERIES

High-end Configuration



## CORTEX A8 CPU

- Flash 2GB EMMC
- 32GB SD card, 64GB USB Flash Drive supported
- RS232/RS485/RS422 supported
- Ethernet, CANBus, USB2.0 (USB Host; USB Client) port supported

HTML5 as the background language, breaks through the traditional restrictions.



Exquisite Graphics

Rich library of charts ,meters.



Multi-language

Up to 8 language that could be displayed on the screen.



Multi-communication Port

Up to 5 serial ports, Ethernet port ,CAN protocol, Modbus,over 200 protocols supported.

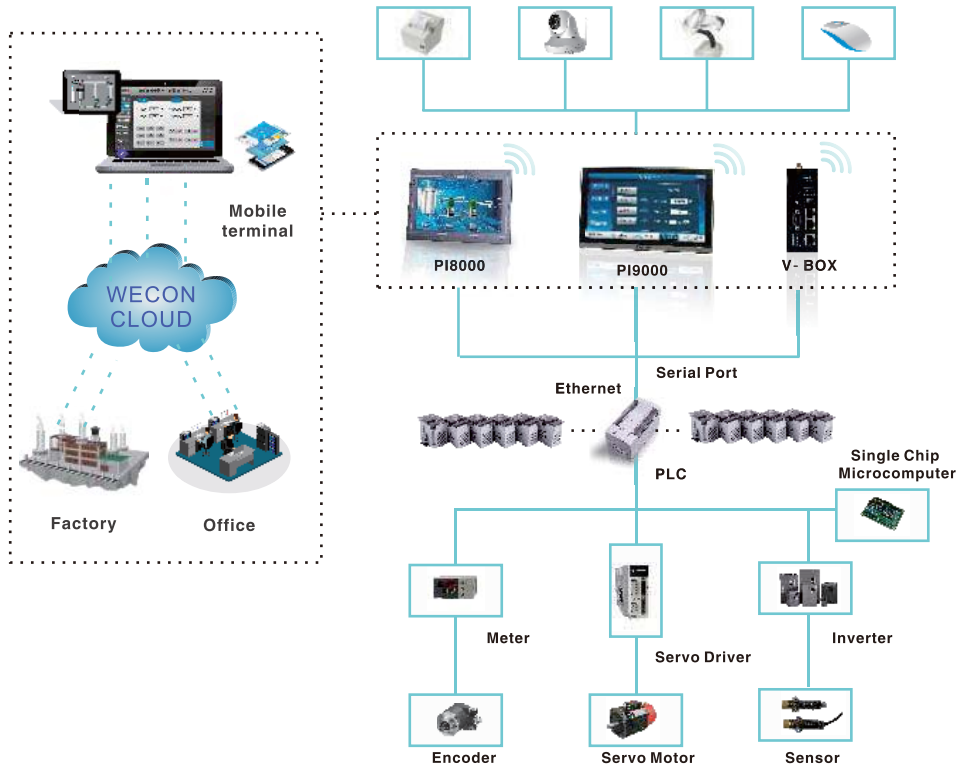


External Devices

Micro-printer, Barcode scanner, WIFI, USB,USB scanner etc.

# INTELLIGENT

## Cloud Platform >>



## Cloud Monitoring

Wecon Smart App for Android/iOS devices supports multiple users operating simultaneously on PI 8000/9000 Series HMI.



# SECURITY

## Cloud Message



In case of emergency, notification could be sent to your mobile and you can deal with it immediately.

## Remote Debug over cloud



Through connection over cloud, PLC and HMI could be connected to PC for online debugging and programming.

## Security System >>



### Access Authorization

Access authorization can be set to each button to protect against unauthorized operation or misoperation. Roles are to be assigned to users to facilitate management.



### Operation Record

- To record each step of operations from authorized users.
- Timestamp, buttons pressed and depressed, everything would be logged.
- Log files are stored in database format for data analyzation to improve management.



### Security Management

- Programmer passwords can protect your project from unauthorized access or reverse engineering.
- Project passwords protect your project files against uploading and running on unauthorized HMIs.



### Password Security

Project passwords, access passwords, administration passwords and remote passwords are working together to ensure secure access.



Water Treatment



Smart Breeding



Vehicle



Smart Factory



Security

# PI3000i SERIES

## NEW UPGRADE MORE FLUENT TOUCH

- Large capacity library
- Enhance software security
- Less boot time
- Better waterproof & cooling



Faster screen update



Faster screen switch



Better communication stability

### Three models for different demands

|              |   |
|--------------|---|
| PI3070i      | 7 inch HMI, suitable for general applications.                      |
| PI3102i      | 10.2 inch high resolution HMI, 1024*600 pixels, Ethernet supported. |
| PI3070i-SL   | 7 inch open frame HMI, with rear mount installation.                |
| PI3070i-N    | Ethernet supported.   |
| PI3070i-N-SL | Ethernet supported.   |

# PI3000ie SPECIFICATIONS

## Basic HMI



PI3070ie



PI3102ie

| Item                 | Specifications                     |  |                               |
|----------------------|------------------------------------|--|-------------------------------|
| CPU                  | Cortex A35 1.2GHz                  |  |                               |
| Touch Screen         | High precision four-wire resistive |  |                               |
| Display              | Screen Size                        | 7 Inch / 10.2 Inch                             |                               |
|                      | Resolution                         | 800*480 / 1024*600                             |                               |
|                      | Brightness                         | 250 cd/m <sup>2</sup> / 350 cd/m <sup>2</sup>  |                               |
|                      | Backlight Type                     | LED  |                               |
|                      | Backlight Life Time                | 50,000 Hours                                   |                               |
| Storage              | Flash                              | 128MB  |                               |
|                      | RAM                                | DDRII 64MB                                     |                               |
|                      | SD Card                            | NA   |                               |
| Ports                | USB                                | USB Host: USB 2.0 x 1; USB Client: USB 2.0 x 1 |                               |
|                      | Port Number                        | 1 Physical Serial Ports                        |                               |
|                      | Serial Port                        | COM1   | RS232, RS422 / RS485 (2 in 1) |
|                      |                                    | COM2   | --                            |
|                      |                                    | COM3   | RS485                         |
| Ethernet             | N/A                                |  |                               |
| Permanent Calendar   | Built-in                           |  |                               |
| Power                | Power Supply                       | 24V DC(12~28V DC)                              |                               |
|                      | Power Consumption                  | < 15W  |                               |
| Dimension            | Enclosure                          | PC+ABS   |                               |
|                      | Dimension(mm)                      | 201.2W*147.2H*39.0D / 272.0W*191.0H*41.5D      |                               |
|                      | Mounting Size (mm)                 | 192.0W*138.0H / 260.0W*179.0H                  |                               |
|                      | Weight (KG)                        | 0.52 / 1.02                                    |                               |
| Environment          | Protection                         | IP65 (Front panel)                             |                               |
|                      | Temperature                        | Storage: -30℃~70℃; Working: -10℃~60℃           |                               |
|                      | Humidity                           | 10 ~ 90%RH(Non-condensing)                     |                               |
|                      | Vibration Resistance               | 10 ~ 25 Hz (X, Y, Z direction 2G/30 minutes)   |                               |
| CE Certification     | CE Marked                          |  |                               |
| FCC Certification    | FCC Class A                        |  |                               |
| Programming Software | PI Studio                          |  |                               |
| Remote Control       | N/A                                |  |                               |

# PI3000i SPECIFICATIONS

## Basic HMI



### Model

PI3070i PI3070i-N PI3102i PI3070i-SL PI3070i-N-SL

| Item                 | Specifications                     |   |               |                       |     |                       |  |
|----------------------|------------------------------------|---|---------------|-----------------------|-----|-----------------------|--|
| CPU                  | Cortex A7 528MHz                   |   |               |                       |     |                       |  |
| Touch Screen         | High precision four-wire resistive |   |               |                       |     |                       |  |
| Display              | Screen Size                        | 7 Inch  |               | 10.2 Inch             |     | 7 Inch                |  |
|                      | Resolution                         | 800*480   |               | 1024*600              |     | 800*480               |  |
|                      | Brightness                         | 250 cd/m <sup>2</sup>                           |               | 350 cd/m <sup>2</sup> |     | 250 cd/m <sup>2</sup> |  |
|                      | Backlight Type                     | LED   |               |                       |     |                       |  |
|                      | Backlight Life Time                | 50,000 Hours                                    |               |                       |     |                       |  |
|                      | Colors                             | 16,000k colors                                  |               |                       |     |                       |  |
| Storage              | Flash                              | 128MB   |               |                       |     |                       |  |
|                      | RAM                                | DDRIII 128MB                                    |               |                       |     |                       |  |
|                      | SD Card                            | NA  |               |                       |     |                       |  |
| Ports                | USB                                | USB Host: USB 2.0 x 1 ; USB Client: USB 2.0 x 1 |               |                       |     |                       |  |
|                      | Port Number                        | 1 Physical Serial Ports                         |               |                       |     |                       |  |
|                      | Serial Port                        | COM1  | RS422 / RS485 |                       |     |                       |  |
|                      |                                    | COM2  | RS232         |                       |     |                       |  |
|                      |                                    | COM3  | --            |                       |     |                       |  |
|                      | Ethernet                           | N/A   | YES           | YES                   | N/A | YES                   |  |
| Permanent Calendar   | Built-in                           |   |               |                       |     |                       |  |
| Power                | Power Supply                       | 24V DC(12~28V DC)                               |               |                       |     |                       |  |
|                      | Power Consumption                  | < 8W  |               | < 10W                 |     | < 8W                  |  |
| Dimension            | Enclosure                          | ABS   |               |                       |     |                       |  |
|                      | Dimension(mm)                      | 201.2W*147.2H*39.0D                             |               | 272.0W*190.0H*41.5D   |     | 191.2W*137.2H*41.0D   |  |
|                      | Mounting Size (mm)                 | 192.0W*138.0H                                   |               | 260.0W*179.0H         |     | 172.0W*111.0H         |  |
|                      | Weight (KG)                        | 0.51 / 0.74                                     |               | 1.00 / 1.31           |     | 0.52 / 0.74           |  |
| Environment          | Protection                         | IP65 (Front panel)                              |               |                       |     |                       |  |
|                      | Temperature                        | Storage: -20℃~70℃ ; Working: -10℃~60℃           |               |                       |     |                       |  |
|                      | Humidity                           | 10 ~ 85%RH(Non-condensing)                      |               |                       |     |                       |  |
|                      | Vibration Resistance               | IEC61131-2 Standard                             |               |                       |     |                       |  |
| CE Certification     | CE Marked                          |   |               |                       |     |                       |  |
| FCC Certification    | FCC Class A                        |   |               |                       |     |                       |  |
| Programming Software | PI Studio                          |   |               |                       |     |                       |  |
| Remote Control       | N/A                                |   |               |                       |     |                       |  |

# PI3000 SPECIFICATIONS

## Basic HMI

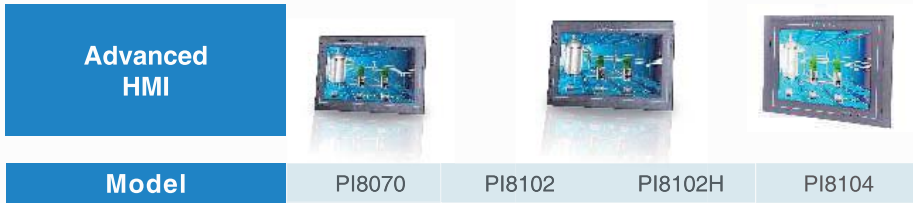


### Model

PI3070N PI3102N PI3102H

| Item                 | Specifications                     |   |                   |                       |  |
|----------------------|------------------------------------|---|-------------------|-----------------------|--|
| CPU                  | Cortex A8 600MHz                   |   |                   |                       |  |
| Touch Screen         | High precision four-wire resistive |   |                   |                       |  |
| Display              | Screen Size                        | 7 Inch  |                   | 10.2 Inch             |  |
|                      | Resolution                         | 800*480   |                   |                       |  |
|                      | Brightness                         | 300 cd/m <sup>2</sup>                           |                   | 350 cd/m <sup>2</sup> |  |
|                      | Backlight Type                     | LED   |                   |                       |  |
|                      | Backlight Life Time                | 50,000 Hours                                    |                   |                       |  |
|                      | Colors                             | 16,000k colors                                  |                   |                       |  |
| Storage              | Flash                              | 128MB   |                   |                       |  |
|                      | RAM                                | DDRIII 128MB                                    |                   |                       |  |
|                      | SD Card                            | Compatible                                      |                   |                       |  |
| Ports                | USB                                | USB Host: USB 2.0 x 1 ; USB Client: USB 2.0 x 1 |                   |                       |  |
|                      | Port Number                        | 2 Physical Serial Ports                         |                   |                       |  |
|                      | Serial Port                        | COM1  | RS232/RS422/RS485 |                       |  |
|                      |                                    | COM2  | RS232/RS485       |                       |  |
|                      |                                    | COM3  | --                |                       |  |
|                      | Ethernet                           | YES   |                   |                       |  |
| Permanent Calendar   | Built-in                           |   |                   |                       |  |
| Power                | Power Supply                       | 24V DC(12~28V DC)                               |                   |                       |  |
|                      | Power Consumption                  | <10W  |                   |                       |  |
| Dimension            | Enclosure                          | ABS   |                   |                       |  |
|                      | Dimension(mm)                      | 200.1W*146.0H*36.5D                             |                   | 271.8W*190.4H*41.2D   |  |
|                      | Mounting Size (mm)                 | 192.0W*138.0H                                   |                   | 260.0W*179.0H         |  |
|                      | Weight (KG)                        | 0.6   |                   | 1.2                   |  |
| Environment          | Protection                         | IP65 (Front panel)                              |                   |                       |  |
|                      | Temperature                        | Storage: -30℃~70℃ ; Working: -10℃~60℃           |                   |                       |  |
|                      | Humidity                           | 10 ~ 90%RH(Non-condensing)                      |                   |                       |  |
|                      | Vibration Resistance               | 10~25Hz (X,Y,Z direction 2G/3D minutes)         |                   |                       |  |
| CE Certification     | CE Marked                          |   |                   |                       |  |
| FCC Certification    | FCC Class A                        |   |                   |                       |  |
| Programming Software | PI Studio                          |   |                   |                       |  |
| Remote Control       | N/A                                |   |                   |                       |  |

# PI8000 SPECIFICATIONS



| Item               | Specifications                     |  |                       |                       |
|--------------------|------------------------------------|--|-----------------------|-----------------------|
| CPU                | Cortex A8 600MHz                   |  |                       |                       |
| Touch Screen       | High precision four-wire resistive |  |                       |                       |
| Display            | Screen Size                        | 7 Inch                                       | 10.2 Inch             | 10.4 Inch             |
|                    | Resolution                         | 800*480                                      | 800*480               | 1024*600              |
|                    | Brightness                         | 300 cd/m <sup>2</sup>                        | 350 cd/m <sup>2</sup> | 350 cd/m <sup>2</sup> |
|                    | Backlight Type                     | LED  |                       |                       |
|                    | Backlight Life Time                | 50,000 Hours                                 |                       |                       |
|                    | Colors                             | 16,000k colors                               |                       |                       |
| Storage            | Flash                              | 2GB EMMC                                     |                       |                       |
|                    | RAM                                | DDRIII 512MB                                 |                       |                       |
|                    | SD Card                            | Compatible                                   |                       |                       |
| I/O Ports          | USB                                | USB Host:USB 2.0 x 1 USB Client:USB 2.0 x 1  |                       |                       |
|                    | Serial Port                        | COM1   | RS232,RS422/RS485     |                       |
|                    |                                    | COM2   | RS232,RS485           |                       |
|                    |                                    | COM3   | RS485                 |                       |
|                    | Ethernet                           | YES  |                       |                       |
|                    | CAN                                | YES  |                       |                       |
| Permanent Calendar | Built-in                           |  |                       |                       |
| Power              | Power Supply                       | 24V DC(12-28V DC)                            |                       |                       |
|                    | Power Consumption                  | <10W   |                       |                       |
| Dimension          | Enclosure                          | ABS  |                       |                       |
|                    | Dimension(mm)                      | 200.1W*146.0H*36.5D                          | 271.8W*190.4H*41.2D   | 298.0W*223.0H*53.5D   |
|                    | Mounting Size(mm)                  | 192.0W*138.0H                                | 260.0W*179.0H         | 288.0W*212.0H         |
|                    | Weight(KG)                         | 0.6  | 1.2                   | 1.9                   |
| Environment        | Protection                         | IP65 (Front panel)                           |                       |                       |
|                    | Storage Environment                | Storage :-30°C ~ 70°C; Working: -10°C ~ 60°C |                       |                       |
|                    | Working Environment                | 10 ~ 90%RH(Non-condensing)                   |                       |                       |
|                    | Vibration Resistance               | 10 ~ 25 Hz (X, Y, Z direction 2G/30 minutes) |                       |                       |
| CE Certification   | CE Marked                          |  |                       |                       |
| FCC Certification  | FCC Class A                        |  |                       |                       |
| Software           | PI Studio                          |  |                       |                       |
| Remote Control     | Optional                           |  |                       |                       |

# PI9000 SPECIFICATIONS



| Item               | Specifications                     |  |                    |
|--------------------|------------------------------------|--|--------------------|
| CPU                | Cortex A9 1.4GHz                   |  |                    |
| Touch Screen       | High precision four-wire resistive |  |                    |
| Display            | Screen Size                        | 12 Inch 15 Inch                              |                    |
|                    | Resolution                         | 1920*1080                                    |                    |
|                    | Brightness                         | 250 cd/m <sup>2</sup>                        |                    |
|                    | Backlight Type                     | LED  |                    |
|                    | Backlight Life Time                | 50,000 Hours                                 |                    |
|                    | Colors                             | 16,000k colors                               |                    |
| Storage            | Flash                              | 4GB EMMC                                     |                    |
|                    | RAM                                | DDRIII 512MB                                 |                    |
|                    | SD Card                            | Compatible                                   |                    |
| I/O Ports          | USB                                | USB Host:USB 2.0 x 1 USB Client:USB 2.0 x 1  |                    |
|                    | Serial Port                        | COM1   | RS232, RS422/RS485 |
|                    |                                    | COM2   | RS232, RS485       |
|                    |                                    | COM3   | RS485              |
|                    | Ethernet                           | YES  |                    |
| Permanent Calendar | Built-in                           |  |                    |
| Power              | Power Supply                       | 24V DC(12-28V DC)                            |                    |
|                    | Power Consumption                  | <10W   |                    |
| Dimension          | Enclosure                          | Aluminum                                     |                    |
|                    | Dimension(mm)                      | 312.6W*208.9H*49.9D 402.9W*253.2H*47.0D      |                    |
|                    | Mounting Size(mm)                  | 306.0W*202.0H 394.0W*244.0H                  |                    |
|                    | Weight (KG)                        | 2.2 3.1                                      |                    |
| Environment        | Protection                         | IP65 (Front panel)                           |                    |
|                    | Storage Environment                | Storage:-30°C ~ 70°C; Working: 0°C ~ 50°C    |                    |
|                    | Working Environment                | 10 ~ 90%RH(Non-condensing)                   |                    |
|                    | Vibration Resistance               | 10 ~ 25 Hz (X, Y, Z direction 2G/30 minutes) |                    |
| CE Certification   | CE Marked                          |  |                    |
| FCC Certification  | FCC Class A                        |  |                    |
| Software           | PI Studio                          |  |                    |
| Remote Control     | Optional                           |  |                    |

# LEVI SERIES SPECIFICATIONS

Standard  
HMI



Model

LEVI2035T    LEVI2043T    LEVI2043E    LEVI2043E-N    LEVI2043E-U

| Item              |                     | Specifications                               |   |                    |                           |          |
|-------------------|---------------------|--|---|--------------------|---------------------------|----------|
| General           | Screen Size         | 3.5 Inch                                     | 4.3 Inch  | 4.3 Inch           | 4.3 Inch                  | 4.3 Inch |
|                   | Resolution          | 320*240                                      | 480*272   |                    | 480*272                   |          |
|                   | Colors              | 260k colors                                  |   |                    |                           |          |
|                   | Brightness          | 400 cd/m <sup>2</sup>                        |   |                    |                           |          |
|                   | Backlight Type      | LED  |   |                    |                           |          |
|                   | Touch Screen        | High precision four-wire resistive           |   |                    |                           |          |
|                   | Backlight Life Time | 50,000 hours                                 |   |                    |                           |          |
|                   | CPU                 | 32-bits 300MHz RISC                          |   |                    |                           |          |
|                   | Storage             | 128M FLASH + 128M DDRAM                      |   |                    |                           |          |
|                   | RTC                 | 256KB+real time clock                        |   |                    |                           |          |
|                   | Printer Port        | Serial Port Printer                          |   |                    |                           |          |
|                   | USB Port            | Micro-USB                                    | USB   |                    | Micro-USB                 |          |
|                   | SD Card             | --   |   |                    |                           |          |
| COM               | COM1                | RS422/RS485                                  |   |                    |                           |          |
|                   | COM2                | RS232  |   |                    |                           |          |
|                   | COM3                | --   |   |                    |                           |          |
| Power             | Rated Power         | < 5W   |   |                    |                           |          |
|                   | Power Supply        | DC24V (12 ~ 28V DC)                          |   |                    |                           |          |
|                   | Allowed Power Fail  | < 5ms  |   |                    |                           |          |
|                   | Insulation          | >20MΩ 500VDC                                 |   |                    |                           |          |
|                   | Withstand Voltage   | 500V AC <1 minute                            |   |                    |                           |          |
| Dimension         | Enclosure           | ABS, Black                                   |   |                    |                           |          |
|                   | Dimension (mm)      | 96.0W*81.0H*33.0D                            | 141.4W*85.4H*38.9D  | 141.0W*86.0H*30.3D |                           |          |
|                   | Mounting Size       | 91.0W* 73.0H                                 | 131.0W*79.0H  | 131.0W* 78.0H      |                           |          |
|                   | Net / Gross (KG)    | 0.14/0.26                                    | 0.23 / 0.39   | 0.19/0.30          |                           |          |
|                   | Environment         | Temperature                                  | Working Temperature : -10 ~ 60°C ; Storage Temperature : -20 ~ 70°C |                    |                           |          |
| Humidity          |                     | 10 ~ 85%RH (Non-condensing)                  |   |                    |                           |          |
| Vibration         |                     | 10 ~ 25 Hz (X, Y, Z direction 2G/30 minutes) |   |                    |                           |          |
| Cooling           |                     | Air Cooling                                  |   |                    |                           |          |
| Extension         | Ethernet            | --   | --  | --                 | YES    YES                |          |
| Protection        |                     | IP65 ((Front panel))                         |   |                    |                           |          |
| CE Certification  |                     | CE Marked                                    | CE Marked   | CE Marked          | CE Marked    cULus Listed |          |
| FCC Certification |                     | FCC Class A                                  |   |                    |                           |          |

# LEVI SERIES SPECIFICATIONS

Standard  
HMI



Model

LEVI2070D    LEVI700ML

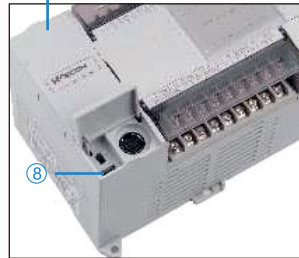
| Item                 |                       | Specifications                               |   |
|----------------------|-----------------------|--|---|
| General              | Screen Size           | 7 Inch                                       |   |
|                      | Resolution            | 800*480                                      |   |
|                      | Colors                | 260k colors                                  |   |
|                      | Brightness            | 300cd/m <sup>2</sup>                         |   |
|                      | Backlight Type        | LED  |   |
|                      | Touch Screen          | High precision four-wire resistive           |   |
|                      | Backlight Life Time   | 50,000 hours                                 |   |
|                      | CPU                   | 32-bits 300MHz RISC                          |   |
|                      | Storage               | 128M FLASH + 128M DDRAM                      |   |
|                      | RTC                   | 256KB  |   |
|                      | Printer Port          | Serial port Printer                          |   |
|                      | USB Port              | USB Host + USB Client                        |   |
|                      | SD Card               | --   |   |
| COM                  | COM1                  | RS422/RS485                                  |   |
|                      | COM2                  | RS232  |   |
|                      | COM3                  | --   |   |
| Power                | Rated Power           | < 8W   |   |
|                      | Power Supply          | DC24V (12 ~ 28V DC)                          |   |
|                      | Allowed Power Fail    | < 5ms  |   |
|                      | Insulation Resistance | > 20MΩ 500V DC                               |   |
|                      | Withstand Voltage     | 500V AC <1 minute                            |   |
| Dimension            | Enclosure             | Grey, PC+ABS                                 | ABS,Black   |
|                      | Dimension (mm)        | 201.0W*147.0H*39.0D                          | 201.0W*146.0H*36.0D   |
|                      | Mounting Size (mm)    | 192.0W*138.0H                                | 192.0W*138.0H   |
|                      | Net / Gross (KG)      | 0.5 / 0.74                                   | 0.56 / 0.80   |
|                      | Environment           | Temperature                                  | Working Temperature : -10 ~ 60°C ; Storage Temperature : -20 ~ 70°C |
| Humidity             |                       | 10 ~ 85%RH (Non-condensing)                  |   |
| Vibration Resistance |                       | 10 ~ 25 Hz (X, Y, Z direction 2G/30 minutes) |   |
| Cooling              |                       | Air cooling                                  |   |
| Protection           |                       | IP65 (Front panel)                           |   |
| CE Certification     |                       | CE Marked                                    |   |
| FCC Certification    |                       | FCC Class A                                  |   |



# PROGRAMMABLE LOGIC CONTROLLER

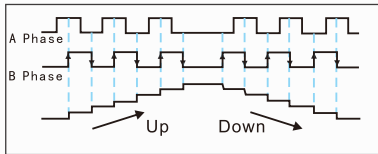
## PLC Introduction

1. Universal Power Supply Design —85~264V AC 50/60 HZ, wide range power supply.
2. All core components used are from well-known global brands.
3. The 'Three layer coating' ensures the reliability in harsh environment.
4. Flash memory data storage.
5. 200 KHz high speed.
6. Com port – 600 TVS, static surge protection.
7. RS485 communication port ensures the reliability of communication in vibration.
8. Reliable and stable high speed USB port for programming download/monitor.

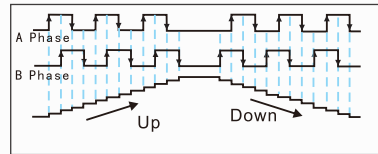


## High Speed Pulse Input

- External high speed pulse input supports Encoder (AB phase) input, pulse + direction mode input; Maximum support for 200 KHz pulse signal input.
- AB phase signal can support configurable frequency settings (i.e. x1, x2 or x4).



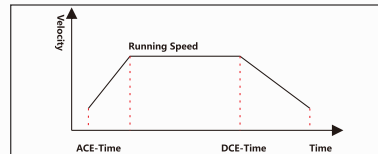
2-doubling



4-doubling

## High Speed Pulse Output

- Supports high speed pulse signal output with acceleration and deceleration.
- The acceleration and deceleration time are configurable.
- Pulse modulation output one by one.



## Program Encryption

It prevents users from illegal copy and tamper of the program.

### Subprogram Encryption

Partial encryption function of the ladder diagram can be realized, and it can encrypt subprograms and interrupts. This function enables protection of important subprogram segment. By choosing the subprogram and setting the password, it can be encrypted. Once it has been encrypted than the subprogram is in "subprogram encryption" state and the encrypted contents will not be displayed.

### Ladder Encryption Methods

The PLC encryption includes project encryption, upload password and download password. All of those passwords can be used for the entire ladder program.

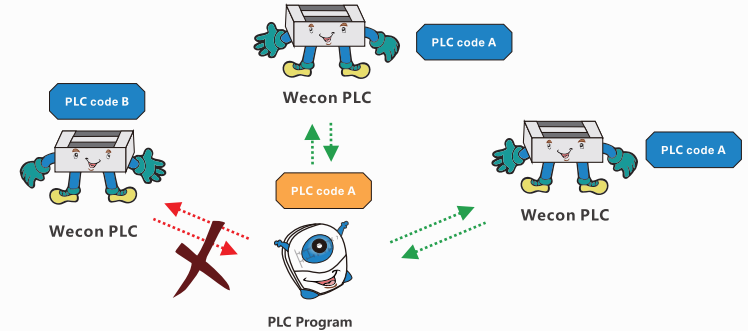
All these kinds of passwords are independent from each other (user need to set password separately during each of these operations), the password can be same or different to ensure copyright of PLC program.



# PROGRAMMABLE LOGIC CONTROLLER

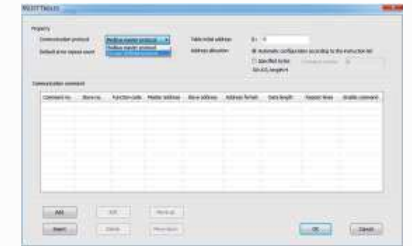
## PLC Host and Program Encryption

For additional protection of the program, project building can be dedicated to the specified PLC model. PLC identification code and program identification code can be introduced. User can set the program identification code of the project and also can set a PLC identification code for the PLC. So, the software will compare the program identification code and PLC identification code at every attempt of the upload or download of the program and can be executed to only designated PLC.



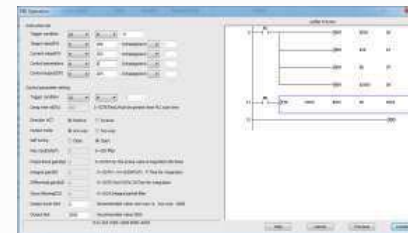
## Modbus Listed Instruction

In the original MODBUS protocol, users must program RS instruction in ladder. But the editing process is quite cumbersome and imperfect. With the help of new method (RSLIST+RSLIST communication list), it becomes easier.

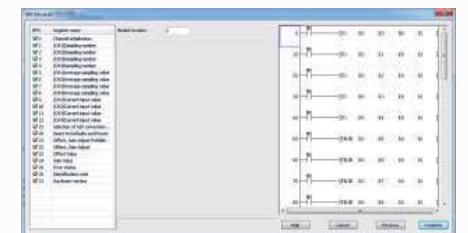


## Features of PLC Wizard Function

- Modules monitor function guides the user to monitor the BFM data in real time. This function reduces customer dependency on module manuals.
- It guides the user to generate the ladder program with the corresponding content (i.e. instruction, modules, BD board, etc.). It saves customer's comprehension time and reduces error which may occur while editing ladder. Also it will help the user to create functioning ladder more quickly.



PID Operation Wizard Setting



LX-4AD Module Wizard Setting

## APPLICATION

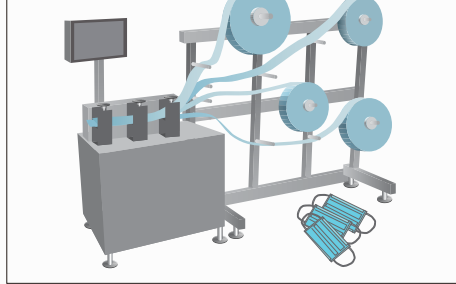
### PLC LX3V Series >>

- Supports 2 BD modules and more expansion modules, as well as stabler operation.
- USB port supports much higher upload and download speed.
- Support PID control, floating point calculation.

Face mask machine includes main unit, feeder unit, welding unit, packing unit.

Pressing and slicing, dividing and transferring, earband welding, each part realizes semi-automatic and automated production, which is faster and more stable. The core of the automatic control system is mainly composed of PLC, HMI, Servo, Stepper motor, photoelectric switch, contactor and relay.

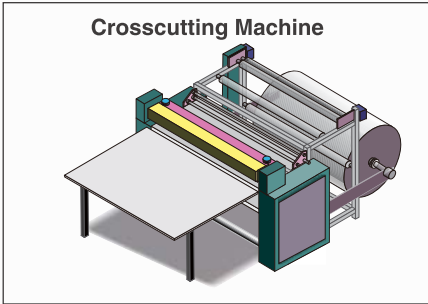
#### Face Mask Machine



### PLC LX3VE Series >>

- Up to 4 channels each of 200 KHz high speed pulse outputs are supported, all 4 channels can work simultaneously.
- Supports 32k steps ladder diagram.
- Supports electronic CAM.
- Supports flying cut and rotary cut.
- Supports jitter pulse output.
- Supports S-type curve to meet special demands.

#### Crosscutting Machine



**Crosscutting machine** belongs to carton processing machinery. The crosscutting machine is used in the production line of the corrugated board. It is used for the cutting of the finished cardboard. The technical feature and equipment adjustment status directly affects the accuracy of the finished cardboard's cutting sizes and the appearance of the pressure line.

#### Side Cutting Machine



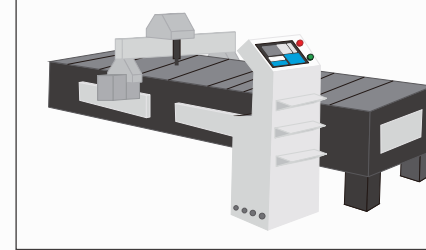
**Side Cutting Machine** is a CNC machine for punching of holes in the side of the plate type furniture. It is suitable for horizontal hole machining and horizontal slotting. It has features like, Infrared automatic induction, accurate detection of the hole position, accurate movement distance, low error, simple operation, eliminate the need of skilled workers, convenient and efficient.

### PLC LX3VM Series >>

- Up to 4 channels independent 200 KHz high speed pulse output are supported, 4 channels can be used simultaneously.
- Supports 32k steps ladder diagram.
- Three axis linear interpolation (Y0,Y1,Y2) and two axis circular interpolation are supported(Y0,Y1).
- Supports electronic CAM.
- Supports Jitter pulse output.

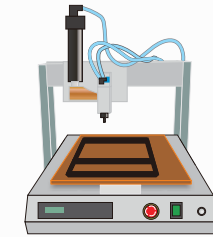
## APPLICATION

#### Cutting Machine



Through the linear-circle interpolation function, the cutting machine realizes the multi axis path positioning control, improves cutting efficiency, quality and relieves the working intensity.

#### Glue Injector Machine/Glue Dispenser



**Glue injector machine** realizes multi-axis path positioning control through linear arc interpolation function and operate it according to the set path. It can be set to semi-automatic, fully automatic, or adjustment modes.

### LX3V-2WT >>

- 2 channels weighing signal input.
- Hardware 24-bit AD input (2: 24-bit Resolution).
- Support 1~2400 Hz frequency conversion speed.
- Adjustable setting of Digital filter.
- Adjustable setting of Tare weight and Net weight.

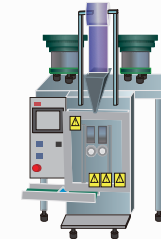
**Screw packaging machine** is a typical equipment for vibrating plate feeding, screw weighing and packaging. It is difficult to count the actual number of screws dropped down from plate by optical bit counter because of the irregular shape of the object to be weighed. Therefore, it is divided into multistage speed to control the vibration of the feeding plate, it uses the round up and round down (half adjust) to complete counting process. The first part uses the weight measurement, the second part uses the number to compare whether the set weight is achieved.

### LX3V-4LTC >>

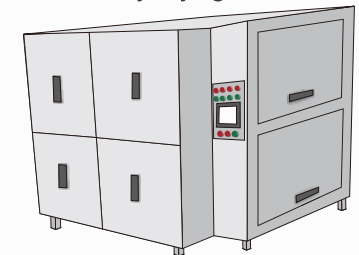
LX3V-4LTC is temperature control module, it has four temperature input ports and four transistor output ports (open collector). It reads data from the thermocouple, and give output value with PID control algorithm.

**Battery Drying Oven**, its working process includes warming – cooling – vacuum – forcing – nitrogen filling. The project has total 100 processes comprises two different process cycles. Data monitoring, data acquiring, PID Auto-tuning (self-tuning). Measurement of Temperature at different 12 points. There difference in the temperature at upper, lower, middle, center of the oven. So, temperature gradient is there and homogeneity of the oven is affected.

#### Screw Packaging Machine



#### Battery Drying Oven



# EXPANSION MODULE

## PLC EXPANSION MODULE

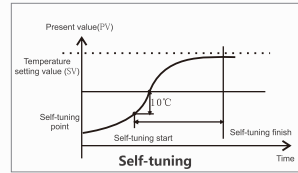
- Multi-module connection :**  
 Support up to 16 modules, 256 input points and 256 output points.  
 Due to the difference plc model, user need to calculate the power consumption at first.
- DA module resolution :12 bits**
- PT/TC module resolution**  
 S-type sensor:-50~+1768 (degree centigrade)  
 R-type sensor:-50~+1768 (degree centigrade)  
 B-type sensor:+250~+1820 (degree centigrade)  
 N-type sensor:-200~+1300 (degree centigrade)  
 E-type sensor:-200~+1000 (degree centigrade)  
 T-type sensor:-200~+400 (degree centigrade)  
 J-type sensor: -210~+600 (degree centigrade)  
 K-type sensor:-200~+1372 (degree centigrade)  
 Pt100 sensor:-100~+600 (degree centigrade)



- AD module resolution :16 bits**
- WT module resolution :24 bits**

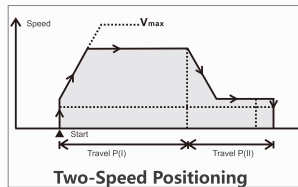
## LX3V-8iTC

- 8 channels for temperature acquiring; Multiple sensor types are supported; Supports thermocouple types like K, S, E, N, B, T, J and R.
- All 8 channels are isolated each other.
- Built-in cold junction compensation, external cold junction compensation, freezing cold junction compensation method.



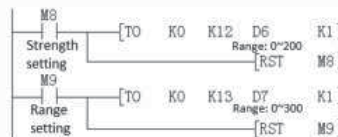
## LX3V-4PGA

- Supports 4-channel high speed pulse outputs.
- Supports zero point return, JOG, interrupt position and two-speed pulse control.
- Supports S-type acceleration and deceleration.
- Maximum supports for 200k pulse output.
- Interrupt signal, origin signal input.



## LX3V-2WT

- 2 channels weighing signal input.
- Hardware 24-bits AD input (2: 24-bit Resolution).
- Supports 1~2400 Hz frequency conversion.
- Adjustable setting of Digital filter.
- Adjustable setting of Tare weight and Net weight.
- Zero-tracking can reduce the influence of temperature drift effective.



# BD MODULE

## Analog BD BOARD

Multiple Mixed

Low Cost

Small Size

Two BD-board access (Analog Module + Communication module)



| Model | Resolution | Input/Output Range      | Data Range  |
|-------|------------|-------------------------|-------------|
| DA    | 12         | Output Current : 4~20mA | 0~2000      |
| AD    | 12         | Input Current : 4~20mA  | 0~2000      |
| PT    | 14         | Sensor:PT100-100~600°C  | -1000~6000  |
| TC    | 14         | Sensor:Ktype-100~1200°C | -1000~12000 |
| TC    | 14         | Sensor:Jtype-100~600°C  | -1000~6000  |
| DAV   | 12         | Output Voltage:-10~10V  | -2000~2000  |
| ADV   | 12         | Input Voltage:-10~10V   | -2000~2000  |

## Communication Expansion Board

### LX3V-2RS485-BD



LX3V-2RS485-BD can add two additional RS485 communication ports.

- Data transfer without protocol  
It supports all type of devices with RS-485 communication without protocol. e.g. bar code reader and printer. Data's sending and receiving is implemented by the RS instruction.
- Special protocol for data transferring  
Using a special protocol, data transmission can be possible based on 1: N on RS-485 communication.

### LX3VP-ETH-BD



By using LX3VP-ETH-BD, Ethernet port can be added.

- Supports Modbus-Tcp protocol.
- Maximum 8 devices can be connected (no master-slave) to one LX3VP-EH-BD module.

### LX3VP-CAN Communication ( Only some models of 3VP supported [LX-3VP2416 Mix supported] )

- For Good real-time communication, strong correction ability and stable communication.
- Supports CANopen standard protocol DS301 V4.02.
- Supports 16 slave devices when used as master.
- Free configuration by using CANopen network configuration software "CANopen Tool".
- It works as a master or a slave.

# LX3V SERIES PLC PRODUCT

## LX3V Series



| PLC Model            | I/O   | Output type | Dimension (mm) | Pulse Counter | Pulse Output | RS485 | BD Board | Module | Power Supply |
|----------------------|-------|-------------|----------------|---------------|--------------|-------|----------|--------|--------------|
| LX3V-0806MR-A1(D1)   | 8/6   | Relay       | 75x107x87      | 2             | 0            | 1     | 1        | N/A    | AC ( DC )    |
| LX3V-0806MT-A1(D1)   | 8/6   | Transistor  | 75x107x87      | 2             | 2            | 1     | 1        | N/A    | AC ( DC )    |
| LX3V-0806MR-A2(D2)   | 8/6   | Relay       | 75x107x87      | 2             | 0            | 1     | 1        | N/A    | AC ( DC )    |
| LX3V-0806MT-A2(D2)   | 8/6   | Transistor  | 75x107x87      | 2             | 2            | 1     | 1        | N/A    | AC ( DC )    |
| LX3V-1208MR-A1(D1)   | 12/8  | Relay       | 75x107x87      | 2             | 0            | 1     | 1        | N/A    | AC ( DC )    |
| LX3V-1208MT-A1(D1)   | 12/8  | Transistor  | 75x107x87      | 2             | 2            | 1     | 1        | N/A    | AC ( DC )    |
| LX3V-1208MR-A2(D2)   | 12/8  | Relay       | 75x107x87      | 2             | 0            | 1     | 1        | N/A    | AC ( DC )    |
| LX3V-1208MT-A2(D2)   | 12/8  | Transistor  | 75x107x87      | 2             | 2            | 1     | 1        | N/A    | AC ( DC )    |
| LX3V-1208MR2H-A2(D2) | 12/8  | Mix         | 75x107x87      | 2             | 2            | 1     | 1        | N/A    | AC ( DC )    |
| LX3V-1212MR-A(D)     | 12/12 | Relay       | 137x107x87     | 2             | 0            | 2     | 1        | YES    | AC ( DC )    |
| LX3V-1212MT-A(D)     | 12/12 | Transistor  | 137x107x87     | 2             | 2            | 2     | 1        | YES    | AC ( DC )    |
| LX3V-1212MT4H-A(D)   | 12/12 | Transistor  | 137x107x87     | 2             | 4            | 2     | 1        | YES    | AC ( DC )    |
| LX3V-1212MR2H-A(D)   | 12/12 | Mix         | 137x107x87     | 2             | 2            | 2     | 1        | YES    | AC ( DC )    |
| LX3V-1412MR-A(D)     | 14/12 | Relay       | 137x107x87     | 2             | 0            | 2     | 1        | YES    | AC ( DC )    |
| LX3V-1412MT-A(D)     | 14/12 | Transistor  | 137x107x87     | 2             | 2            | 2     | 1        | YES    | AC ( DC )    |
| LX3V-1412MT4H-A(D)   | 14/12 | Transistor  | 137x107x87     | 2             | 4            | 2     | 1        | YES    | AC ( DC )    |
| LX3V-1412MR2H-A(D)   | 14/12 | Mix         | 137x107x87     | 2             | 2            | 2     | 1        | YES    | AC ( DC )    |
| LX3V-1616MR-A(D)     | 16/16 | Relay       | 175x107x87     | 2             | 0            | 2     | 2        | YES    | AC ( DC )    |
| LX3V-1616MT-A(D)     | 16/16 | Transistor  | 175x107x87     | 2             | 2            | 2     | 2        | YES    | AC ( DC )    |
| LX3V-1616MT4H-A(D)   | 16/16 | Transistor  | 175x107x87     | 2             | 4            | 2     | 2        | YES    | AC ( DC )    |
| LX3V-1616MR2H-A(D)   | 16/16 | Mix         | 175x107x87     | 2             | 2            | 2     | 2        | YES    | AC ( DC )    |
| LX3V-2416MR-A(D)     | 24/16 | Relay       | 175x107x87     | 2             | 0            | 2     | 2        | YES    | AC ( DC )    |
| LX3V-2416MT-A(D)     | 24/16 | Transistor  | 175x107x87     | 2             | 2            | 2     | 2        | YES    | AC ( DC )    |
| LX3V-2416MT4H-A(D)   | 24/16 | Transistor  | 175x107x87     | 2             | 4            | 2     | 2        | YES    | AC ( DC )    |
| LX3V-2416MR2H-A(D)   | 24/16 | Mix         | 175x107x87     | 2             | 2            | 2     | 2        | YES    | AC ( DC )    |
| LX3V-2424MR-A(D)     | 24/24 | Relay       | 220x107x87     | 2             | 0            | 2     | 2        | YES    | AC ( DC )    |
| LX3V-2424MT-A(D)     | 24/24 | Transistor  | 220x107x87     | 2             | 2            | 2     | 2        | YES    | AC ( DC )    |
| LX3V-2424MT4H-A(D)   | 24/24 | Transistor  | 220x107x87     | 2             | 4            | 2     | 2        | YES    | AC ( DC )    |
| LX3V-2424MR2H-A(D)   | 24/24 | Mix         | 220x107x87     | 2             | 2            | 2     | 2        | YES    | AC ( DC )    |
| LX3V-3624MR-A(D)     | 36/24 | Relay       | 220x107x87     | 2             | 0            | 2     | 2        | YES    | AC ( DC )    |
| LX3V-3624MT-A(D)     | 36/24 | Transistor  | 220x107x87     | 2             | 2            | 2     | 2        | YES    | AC ( DC )    |
| LX3V-3624MT4H-A(D)   | 36/24 | Transistor  | 220x107x87     | 2             | 4            | 2     | 2        | YES    | AC ( DC )    |
| LX3V-3624MR2H-A(D)   | 36/24 | Mix         | 220x107x87     | 2             | 2            | 2     | 2        | YES    | AC ( DC )    |

# LX3VP SERIES PLC PRODUCT

## LX3VP Series



| PLC Model           | I/O   | Output type | Dimension (mm) | Pulse Counter | Pulse Output | RS485 | CAN      | BD Board | Module | Power Supply |
|---------------------|-------|-------------|----------------|---------------|--------------|-------|----------|----------|--------|--------------|
| LX3VP-1208MR-A(D)   | 12/8  | Relay       | 75x107x87      | 2             | 0            | 1     | N/A      | 1        | N/A    | AC ( DC )    |
| LX3VP-1208MT-A(D)   | 12/8  | Transistor  | 75x107x87      | 2             | 2            | 1     | N/A      | 1        | N/A    | AC ( DC )    |
| LX3VP-1212MR-A(D)   | 12/12 | Relay       | 137x107x87     | 2             | 0            | 2     | N/A      | 1        | YES    | AC ( DC )    |
| LX3VP-1212MT-A(D)   | 12/12 | Transistor  | 137x107x87     | 2             | 2            | 2     | N/A      | 1        | YES    | AC ( DC )    |
| LX3VP-1212MT4H-A(D) | 12/12 | Transistor  | 137x107x87     | 2             | 4            | 2     | N/A      | 1        | YES    | AC ( DC )    |
| LX3VP-1212MR2H-A(D) | 12/12 | Mix         | 137x107x87     | 2             | 2            | 2     | N/A      | 1        | YES    | AC ( DC )    |
| LX3VP-1412MR-A(D)   | 14/12 | Relay       | 137x107x87     | 2             | 0            | 2     | N/A      | 1        | YES    | AC ( DC )    |
| LX3VP-1412MT-A(D)   | 14/12 | Transistor  | 137x107x87     | 2             | 2            | 2     | N/A      | 1        | YES    | AC ( DC )    |
| LX3VP-1412MT4H-A(D) | 14/12 | Transistor  | 137x107x87     | 2             | 4            | 2     | N/A      | 1        | YES    | AC ( DC )    |
| LX3VP-1412MR2H-A(D) | 14/12 | Mix         | 137x107x87     | 2             | 2            | 2     | N/A      | 1        | YES    | AC ( DC )    |
| LX3VP-1616MR-A(D)   | 16/16 | Relay       | 175x107x87     | 2             | 0            | 2     | N/A      | 2        | YES    | AC ( DC )    |
| LX3VP-1616MT-A(D)   | 16/16 | Transistor  | 175x107x87     | 2             | 2            | 2     | N/A      | 2        | YES    | AC ( DC )    |
| LX3VP-1616MT4H-A(D) | 16/16 | Transistor  | 175x107x87     | 2             | 4            | 2     | N/A      | 2        | YES    | AC ( DC )    |
| LX3VP-1616MR2H-A(D) | 16/16 | Mix         | 175x107x87     | 2             | 2            | 2     | N/A      | 2        | YES    | AC ( DC )    |
| LX3VP-2416MR-A(D)   | 24/16 | Relay       | 175x107x87     | 2             | 0            | 2     | Optional | 2        | YES    | AC ( DC )    |
| LX3VP-2416MT-A(D)   | 24/16 | Transistor  | 175x107x87     | 2             | 2            | 2     | Optional | 2        | YES    | AC ( DC )    |
| LX3VP-2416MT4H-A(D) | 24/16 | Transistor  | 175x107x87     | 2             | 4            | 2     | Optional | 2        | YES    | AC ( DC )    |
| LX3VP-2416MR2H-A(D) | 24/16 | Mix         | 175x107x87     | 2             | 2            | 2     | Optional | 2        | YES    | AC ( DC )    |
| LX3VP-2424MR-A(D)   | 24/24 | Relay       | 220x107x87     | 2             | 0            | 2     | N/A      | 2        | YES    | AC ( DC )    |
| LX3VP-2424MT-A(D)   | 24/24 | Transistor  | 220x107x87     | 2             | 2            | 2     | N/A      | 2        | YES    | AC ( DC )    |
| LX3VP-2424MT4H-A(D) | 24/24 | Transistor  | 220x107x87     | 2             | 4            | 2     | N/A      | 2        | YES    | AC ( DC )    |
| LX3VP-2424MR2H-A(D) | 24/24 | Mix         | 220x107x87     | 2             | 2            | 2     | N/A      | 2        | YES    | AC ( DC )    |
| LX3VP-3624MR-A(D)   | 36/24 | Relay       | 220x107x87     | 2             | 0            | 2     | N/A      | 2        | YES    | AC ( DC )    |
| LX3VP-3624MT-A(D)   | 36/24 | Transistor  | 220x107x87     | 2             | 2            | 2     | N/A      | 2        | YES    | AC ( DC )    |
| LX3VP-3624MT4H-A(D) | 36/24 | Transistor  | 220x107x87     | 2             | 4            | 2     | N/A      | 2        | YES    | AC ( DC )    |
| LX3VP-3624MR2H-A(D) | 36/24 | Mix         | 220x107x87     | 2             | 2            | 2     | N/A      | 2        | YES    | AC ( DC )    |

# LX3VE&3VM SERIES PLC PRODUCT

## LX3VE Series



| PLC Model        | I/O   | Output type | Dimension (mm) | Pulse Counter | E-CAM | Pulse Output | RS485 | BD Board | Module | Power Supply |
|------------------|-------|-------------|----------------|---------------|-------|--------------|-------|----------|--------|--------------|
| LX3VE-1412MT-A   | 14/12 | Transistor  | 137x107x87     | 2             | YES   | 2            | 2     | 1        | YES    | AC(DC)       |
| LX3VE-1412MT4H-A | 14/12 | Transistor  | 137x107x87     | 2             | YES   | 4            | 2     | 1        | YES    | AC(DC)       |
| LX3VE-1616MT-A   | 16/16 | Transistor  | 175x107x87     | 2             | YES   | 2            | 2     | 2        | YES    | AC(DC)       |
| LX3VE-1616MT4H-A | 16/16 | Transistor  | 175x107x87     | 2             | YES   | 4            | 2     | 2        | YES    | AC(DC)       |
| LX3VE-2416MT-A   | 24/16 | Transistor  | 175x107x87     | 2             | YES   | 2            | 2     | 2        | YES    | AC(DC)       |
| LX3VE-2416MT4H-A | 24/16 | Transistor  | 175x107x87     | 2             | YES   | 4            | 2     | 2        | YES    | AC(DC)       |
| LX3VE-2424MT-A   | 24/24 | Transistor  | 220x107x87     | 2             | YES   | 2            | 2     | 2        | YES    | AC(DC)       |
| LX3VE-2424MT4H-A | 24/24 | Transistor  | 220x107x87     | 2             | YES   | 4            | 2     | 2        | YES    | AC(DC)       |
| LX3VE-3624MT-A   | 36/24 | Transistor  | 220x107x87     | 2             | YES   | 2            | 2     | 2        | YES    | AC(DC)       |
| LX3VE-3624MT4H-A | 36/24 | Transistor  | 220x107x87     | 2             | YES   | 4            | 2     | 2        | YES    | AC(DC)       |

## LX3VM Series



| PLC Model        | I/O   | Output type | Dimension (mm) | Pulse Counter | E-CAM | Interpolation | Pulse Output | RS485 | BD Board | Module | Power Supply |
|------------------|-------|-------------|----------------|---------------|-------|---------------|--------------|-------|----------|--------|--------------|
| LX3VM-1412MT-A   | 14/12 | Transistor  | 137x107x87     | 2             | YES   | YES           | 2            | 2     | 1        | YES    | AC(DC)       |
| LX3VM-1412MT4H-A | 14/12 | Transistor  | 137x107x87     | 2             | YES   | YES           | 4            | 2     | 1        | YES    | AC(DC)       |
| LX3VM-1616MT-A   | 16/16 | Transistor  | 175x107x87     | 2             | YES   | YES           | 2            | 2     | 2        | YES    | AC(DC)       |
| LX3VM-1616MT4H-A | 16/16 | Transistor  | 175x107x87     | 2             | YES   | YES           | 4            | 2     | 2        | YES    | AC(DC)       |
| LX3VM-2416MT-A   | 24/16 | Transistor  | 175x107x87     | 2             | YES   | YES           | 2            | 2     | 2        | YES    | AC(DC)       |
| LX3VM-2416MT4H-A | 24/16 | Transistor  | 175x107x87     | 2             | YES   | YES           | 4            | 2     | 2        | YES    | AC(DC)       |
| LX3VM-2424MT-A   | 24/24 | Transistor  | 220x107x87     | 2             | YES   | YES           | 2            | 2     | 2        | YES    | AC(DC)       |
| LX3VM-2424MT4H-A | 24/24 | Transistor  | 220x107x87     | 2             | YES   | YES           | 4            | 2     | 2        | YES    | AC(DC)       |
| LX3VM-3624MT-A   | 36/24 | Transistor  | 220x107x87     | 2             | YES   | YES           | 2            | 2     | 2        | YES    | AC(DC)       |
| LX3VM-3624MT4H-A | 36/24 | Transistor  | 220x107x87     | 2             | YES   | YES           | 4            | 2     | 2        | YES    | AC(DC)       |

# MODULE&BD MODULE PRODUCT



## PLC Expansion Module



| Module     | Specification  | Module     | Specification   |
|------------|--|------------|---|
| LX3V-8EX   | 8 Input  | LX3V-2WT   | 2 * Weighting(24-bit)   |
| LX3V-8EYR  | 8 Relay Output   | LX3V-2WT-L | 2 * Weighting(18-bit)   |
| LX3V-8EYT  | 8 Transistor Output  | LX3V-4AD   | 4 * Analog Input  |
| LX3V-16EX  | 16 Input   | LX3V-4DA   | 4 * Analog Output   |
| LX3V-16EYR | 16 Relay Output  | LX3V-4PT   | 4 * Thermal Resistance Input  |
| LX3V-16EYT | 16 Transistor Output                                       | LX3V-4TC   | 4 * Thermocouple Input  |
| LX3V-1WT   | 1 * Weighting(24-bit)                                      | LX3V-4LTC  | 4 * TC with Isolation (PID Control)   |
| LX3V-1WT-L | 1 * Weighting(18-bit)                                      | LX3V-8ITC  | 8*Thermocouple Input  |
| LX3V-4PGA  | 4* pulse generator (Advanced)                              | LX3V-4PGB  | 4* pulse generator (Basic)  |
| LCM-16EX   | 16 Input, supports RS485 Modbus communication              | LCM-16EYR  | 16 Relay Output, supports RS485 Modbus communication.                                 |
| LCM-4TC    | 4*thermocouple Input, supports RS485 Modbus communication. | LCM-2WT    | 2*weighting expansion module, 24-bit resolution, supports RS485 Modbus communication. |

## PLC BD Module



| BD Board         | Function  | BD Board         | Function   |
|------------------|---|------------------|--|
| LX3V-2ADI2DAI-BD | 2 * Analog Input/ Analog Output (4~20mA)                    | LX3V-2PT-BD      | 2 * Thermal Resistance Input   |
| LX3V-2TC2DAI-BD  | 2 * Thermocouple Input;<br>2 * Analog Output (4~20mA)       | LX3V-2PT2ADV-BD  | 2 * Thermal Resistance Input;<br>2 * Analog Voltage input(-10v-10v)  |
| LX3V-2PT2DAI-BD  | 2 * Thermal Resistance Input;<br>2 * Analog Output (4~20mA) | LX3V-2PT2DAV-BD  | 2 * Thermal Resistance Input;<br>2 * Analog Voltage Output(-10v-10v) |
| LX3V-2TC-BD      | 2 * Thermocouple Input                                      | LX3V-2ADV2DAV-BD | 2 * Analog Input/ Output (-10V~10V)                                  |
| LX3V-4ADI-BD     | 4 * Analog Input (4~20mA)                                   | LX3V-2RS485-BD   | 2 * RS485 Communication  |
| LX3V-4ADV-BD     | 4 * Analog Input (-10V~10V)                                 | LX3V-ETH-BD      | 1 * Ethernet Communication   |
| LX3V-2ADV-BD     | 2*Analog Voltage Input(-10v-10v)                            | LX3V-2DAI-BD     | 2*Analog Current Output(4~20mA)                                      |
| LX3V-2ADI-BD     | 2*Analog Current Input(4~20mA)                              | LX3V-2DAV-BD     | 2*Analog Voltage Output(-10v-10v)                                    |
| LX3V-2PTS-BD     |   |                  | 2* Thermal Resistance Input, Precision >0.1℃                         |

# PLC SPECIFICATIONS

## General



|                         | LX3V Series   | LX3VP Series | LX3VE/3VM Series |
|-------------------------|---|--------------|------------------|
| Running Mode            | Round Scan/Interrupt  |              |                  |
| Programming             | Instruction List/Ladder   |              |                  |
| Total Instructions      | Basic Instructions:27/Applied Instruction:138   |              | 140              |
| Execute time            | Basic Instructions:0.06us/Applied Instruction:1~10us  |              |                  |
| System Storage          | 16K   | 64K          | 32K              |
| Download/Monitoring     | Serial Programming Cable/MiniUSB  |              |                  |
| High Speed Pulse Output | Transistor: 2 channels(4 channel optional)/Relay N/A(2 channel optional)  |              |                  |
| External Interrupt      | 6 Channels  |              |                  |
| Timer Interrupt         | 3 Channels  |              |                  |
| Holding Addresses       | Adjustable  |              |                  |
| Storage                 | FLASH   |              |                  |
| Filter                  | For all X input terminals   |              |                  |
| Serial Port             | COM1 : RS422 or RS485<br>COM2 : RS485   |              |                  |
| Temperature             | Working Temperature : 0~55°C/ Storage Temperature : 0~70°C  |              |                  |
| Humidity                | 35~85%RH ( Without condensation )   |              |                  |
| Shock Resistance        | JISC0040 Standard   |              |                  |
| Influence Immunity      | Meet the IEC61000-4-4 and GB/T 17626.4 standard : Noise voltage amplitude 1KVP-P , pulse width 10us, period 0.3 s, edge time 5ns , duration 1min. |              |                  |

## Output



| Item               | Relay Output        | Transistor Output                       |
|--------------------|---------------------|---|
| Output Mode        | --                  | NPN                                     |
| Input Power Supply | DC 24V              | DC 24V                                  |
| Output Circuit     | <AC 250V or <DC 30V | DC 5~30V                                |
| COM Port Current   | --                  | <0.1mA ( DC30V )                        |
| Insulation         | Mechanistic         | Optical Coupling                        |
| Leak current       | --                  | 0.1mA/DC30V                             |
| Min.Load           | --                  | DC 5V2mA                                |
| Max.Load           | Resistive           | 2A point 8A COM port                    |
|                    | Inductive           | 80VA                                    |
|                    | General             | 100W                                    |
| ResponseTime       | ON                  | <0.2ms                                  |
|                    | OFF                 | <10ms<br>(Pulse out put terminal: ~5us) |

# PLC SPECIFICATIONS

## AC Power Supply



| Item              | LX3V(P/E/M)-0806M/1208M/1212M/1412M | LX3V(P/E/M)1616M/2416M/3624M |
|-------------------|-------------------------------------|------------------------------|
| Voltage           | AC 85~265V 50~60HZ                  |                              |
| Power Outage Time | 10ms                                |                              |
| Rush Current      | <15A 5ms/AC 100V;<30A 5ms/AC 200V   |                              |
| Power Fuse        | 250V 3.15A                          | 250V 3.15A                   |
| Power Consumption | <35W                                | <60W                         |
| Power Output      | DC 24V 850mA                        | DC 24V 700mA                 |

## DC Power Supply



| Item              | LX3V/LX3VP/LX3VE/LX3VM PLC |
|-------------------|----------------------------|
| Power Supply      | DC 24V±10%                 |
| Power Outage Time | 10ms                       |
| Power Fuse        | 250V 3.15A                 |
| Rush Current      | <15A 1ms/DC 24V            |
| Impact Current    | <30W                       |